



# AYLIK TEMEL GÖSTERGELER *MONTHLY BASIC INDICATORS*



**2014**

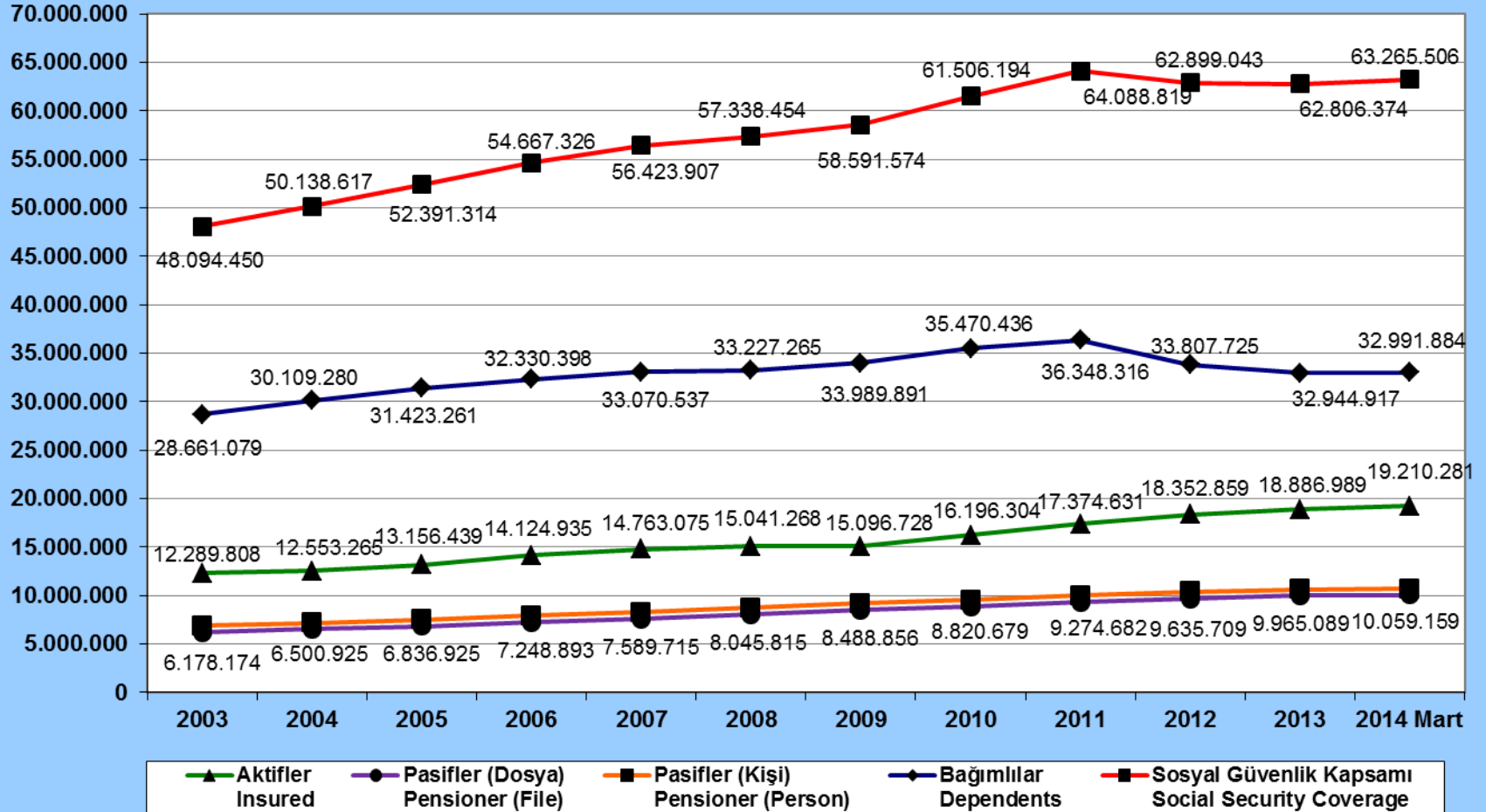
***Mart-March***

# **SİGORTALI İSTATİSTİKLERİ**

## *INSURANCE STATISTICS*

---

Yıllar Years	Aktifler Insured	Pasifler (Dosya) Pensioner (File)	Pasifler (Kişi) Pensioner (Person)	Bağımlılar Dependents	Sosyal Güvenlik Kapsamı Social Security Coverage	Aktif-Pasif Oranı Insured/Pensioner	
<b>2003</b>	12.289.808	6.178.174	6.848.022	28.661.079	48.094.450	1,99	
<b>2004</b>	12.553.265	6.500.925	7.174.632	30.109.280	50.138.617	1,93	
<b>2005</b>	13.156.439	6.836.925	7.504.453	31.423.261	52.391.314	1,92	
<b>2006</b>	14.124.935	7.248.893	7.913.724	32.330.398	54.667.326	1,95	
<b>2007</b>	14.763.075	7.589.715	8.279.444	33.070.537	56.423.907	1,95	
<b>2008</b>	15.041.268	8.045.815	8.746.703	33.227.265	57.338.454	1,87	
<b>2009</b>	15.096.728	8.488.856	9.173.750	33.989.891	58.591.574	1,78	
<b>2010</b>	16.196.304	8.820.679	9.518.648	35.470.436	61.506.194	1,84	
<b>2011</b>	17.374.631	9.274.682	10.014.982	36.348.316	64.088.819	1,87	
<b>2012</b>	18.352.859	9.635.709	10.382.419	33.807.725	62.899.043	1,90	
<b>2013</b>	18.886.989	9.965.089	10.607.263	32.944.917	62.806.374	1,90	
<b>2014</b>	<b>Ocak January</b>	18.799.802	9.989.807	10.623.207	32.980.887	62.771.101	1,88
	<b>Şubat February</b>	18.965.687	10.030.818	10.664.058	33.009.843	63.016.066	1,89
	<b>Mart March</b>	19.210.281	10.059.159	10.693.471	32.991.884	63.265.506	1,91



### AKTİF SİGORTALI SAYILARI *Number of Insured Persons*

SGK KAPSAMI- SSI Coverage	2008	2009	2010	2011	2012	2013	2014 Mart March
<b>4-1/a Sigortalı- EUSC</b>	<b>9.574.873</b>	<b>9.618.438</b>	<b>10.575.935</b>	<b>11.547.134</b>	<b>12.527.337</b>	<b>13.136.339</b>	<b>13.352.357</b>
<b>Zorunlu- Compulsorily Insured</b>	8.802.989	9.030.202	10.030.810	11.030.939	11.939.620	12.484.113	12.700.185
<b>Çırac- Apprentices</b>	249.292	321.649	349.581	298.180	306.617	320.730	325.394
<b>Yurtdışı Topluluk- Collective Insurance</b>	48.401	35.930	25.778	32.867	34.600	34.987	32.603
<b>Tarım- Insured in Agricultural</b>	218.094	178.541	152.802	124.911	85.717	62.988	48.896
<b>Kısmi Süreli Çalışan Sigortalılar** Insured Working Part-Time</b>	256.097	52.116	16.964	60.237	160.783	233.521	245.279
<b>4-1/b Sigortalı- Self-Employed</b>	<b>3.260.719</b>	<b>3.236.872</b>	<b>3.337.858</b>	<b>3.273.297</b>	<b>3.162.914</b>	<b>2.927.250</b>	<b>3.008.301</b>
<b>Zorunlu- Compulsorily Insured</b>	1.883.836	1.816.933	1.847.844	1.868.181	1.899.053	1.821.939	1.919.072
<b>Tarım- Insured in Agricultural</b>	1.127.744	1.014.948	1.101.131	1.121.777	1.056.852	928.454	942.484
<b>Muhtar- Demarch</b>	14.070	15.200	14.348	12.559	11.452	10.524	9.728
<b>İsteğe Bağlı- Voluntarily Insured</b>	235.069	389.791	374.535	270.780	195.557	166.333	137.017
<b>4-1/c Sigortalı- Civil Cervant</b>	<b>2.205.676</b>	<b>2.241.418</b>	<b>2.282.511</b>	<b>2.554.200</b>	<b>2.662.608</b>	<b>2.823.400</b>	<b>2.849.623</b>
<b>Toplam Aktif Sigortalı- Total Insured</b>	<b>15.041.268</b>	<b>15.096.728</b>	<b>16.196.304</b>	<b>17.374.631</b>	<b>18.352.859</b>	<b>18.886.989</b>	<b>19.210.281</b>
<b>Özel Sandıklar- Funds</b>	<b>105.707</b>	<b>109.668</b>	<b>114.600</b>	<b>119.682</b>	<b>122.655</b>	<b>130.825</b>	<b>131.958</b>
<b>Gelir Testi Yaptıranlar*** Those making income-test</b>	<b>9.337.850</b>	<b>9.647.131</b>	<b>9.395.185</b>	<b>8.865.470</b>	<b>11.357.306</b>	<b>12.351.352</b>	<b>12.414.765</b>
<b>Ödeme Gücü Olmayanlar (60/c-1) Those not having solvency</b>	<b>9.337.850</b>	<b>9.647.131</b>	<b>9.395.185</b>	<b>8.865.470</b>	<b>7.558.821</b>	<b>7.651.485</b>	<b>4.734.800</b>
<b>Ödeme Gücü Olanlar (60/g) Those having solvency (60/g)</b>					<b>3.798.485</b>	<b>4.699.867</b>	<b>7.679.965</b>

(\*) EUSC: Employer Under Service Contract

(\*\*) Kısmi Süreli Çalışan Sigortalıların içerisinde ay içinde 30 günden az prim ödeyen sigortalılar, 5510 sayılı Kanun'a göre 4/a maddesine tabi isteğe bağlı sigortalılardan 4/b ye geçişleri devam eden sigortalılar, tarım, ticari araç sahipleri ve işsizlik sigortası ödeyen ticari araç sahipleri, sanatçılar ile işsizlik sigortası ödeyen sanatçılar yer almaktadır.

(\*\*\*) 5510 sayılı Kanunun (60/c-1) ve (60/g) bentleri kapsamında genel sağlık sigortalısı olarak tescil edilen kişilerden oluşmaktadır. 01/01/2012 tarihi öncesinde yeşil kart verilerek 3816 sayılı Kanuna göre sağlık yardımları karşılananlar, bu tarihten itibaren Kanunun (60/c-1) alt bendi kapsamında genel sağlık sigortalısı olarak tescil edilmişlerdir.

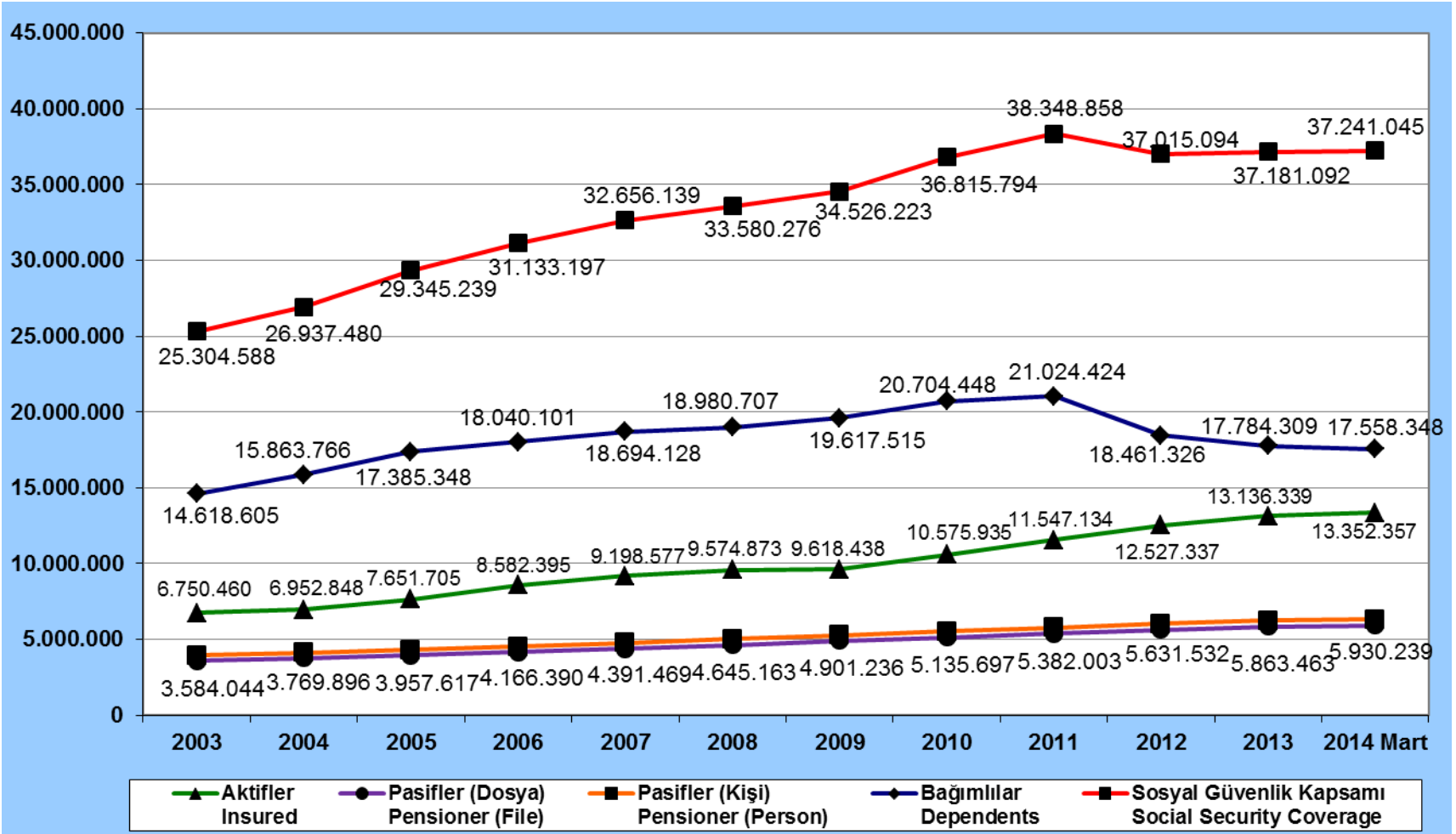
(\*\*) Insureds working part time include those who pay premiums for less than 30 days in a month; voluntarily insureds whose transfers from 4/a to 4/b (Law No. 5510) proceed, agriculture and commercial vehicle owners, commercial vehicle owners who pay premiums for unemployment insurance, artists, and artists who pay premiums for unemployment insurance.

(\*\*\*) These are people registered as general health insurance according to articles (60/c-1) ve (60/g) of Law No: 5510. People whose health benefit were covered according to Law No:3816 before 01/01/2012, are registered as general health insurance according to Article (60/c-1) after this date.

### PASİF SİGORTALI SAYILARI *Number of Insured Persons*

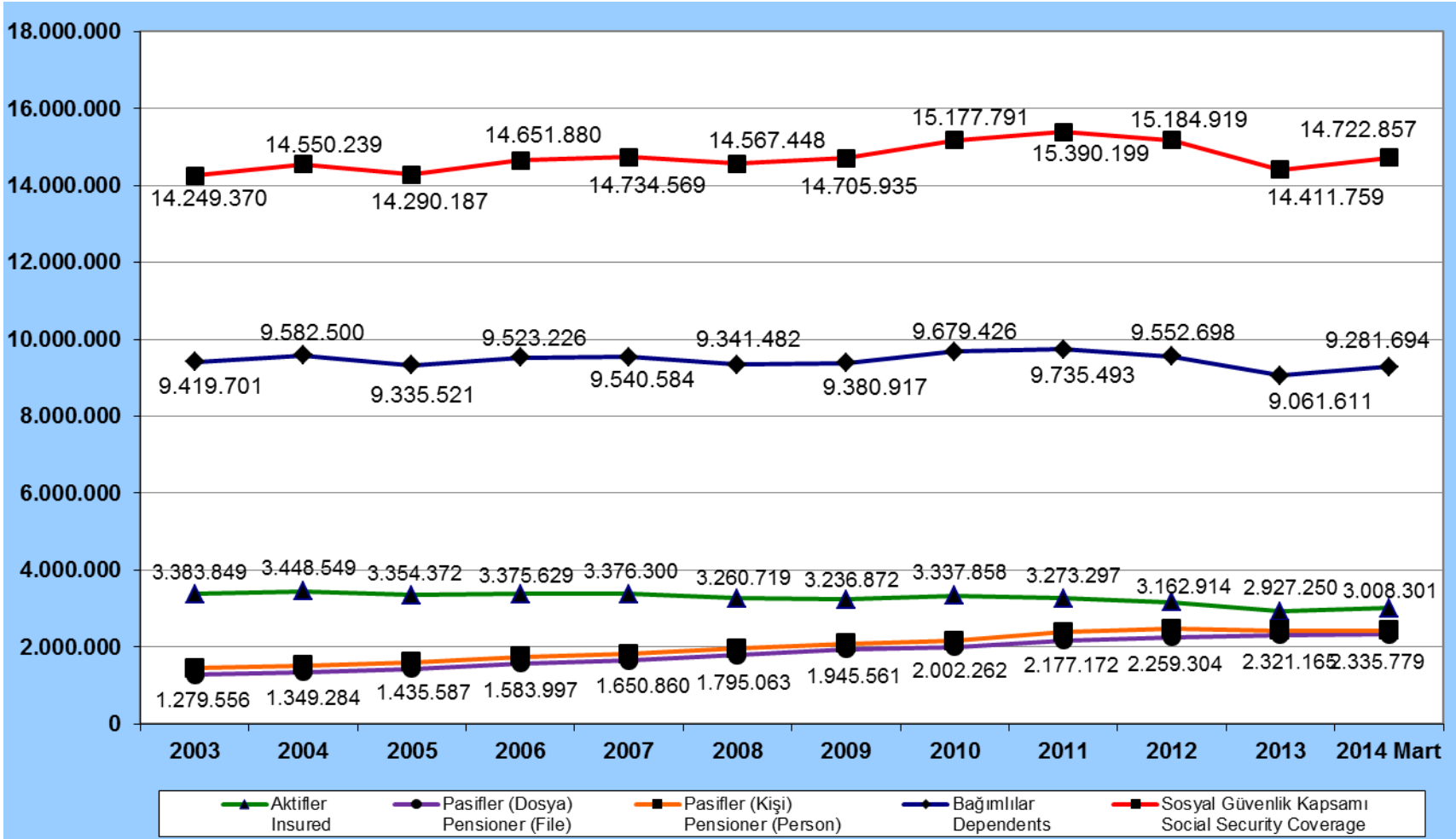
SGK KAPSAMI- SSI Coverage	2008	2009	2010	2011	2012	2013	2014 Mart March
<b>4-1/a Aylık Alanlar (Dosya) - EUSC Pensioner (File)</b>	<b>4.645.163</b>	<b>4.901.236</b>	<b>5.135.697</b>	<b>5.382.003</b>	<b>5.631.532</b>	<b>5.863.463</b>	<b>5.930.239</b>
<b>4-1/a Aylık Alanlar (Kişi) - EUSC Pensioner (Person)</b>	<b>5.024.696</b>	<b>5.290.270</b>	<b>5.535.411</b>	<b>5.777.300</b>	<b>6.026.431</b>	<b>6.260.444</b>	<b>6.330.340</b>
Yaşlılık-Old-age	3.467.017	3.665.784	3.850.199	4.041.409	4.235.496	4.412.711	4.464.574
Malullük- Invalidity	65.175	66.038	66.902	67.575	68.593	69.153	69.564
Ölen Sigortalı (Dosya)- Death (file)	1.011.082	1.065.787	1.112.739	1.165.170	1.216.760	1.268.502	1.282.512
Ölen Sigortalıların Haksahipleri-Survivors (Widows,Orphans)	1.362.588	1.426.472	1.483.417	1.531.014	1.582.401	1.635.705	1.652.646
Sürekli İş göremezlik Geliri Alanlar Receiver of permanent incapacity income	56.668	57.422	58.496	58.966	60.612	61.492	61.587
S.İ Ölüm Geliri (Dosya)- Death (permanent incapacity) (file)	45.221	46.205	47.361	48.883	50.071	51.605	52.002
S.İ Ölüm Geliri Alan Haksahibi Survivors from empl.ins.and.acc.dis	73.248	74.554	76.397	78.336	79.329	81.383	81.969
<b>4-1/b Aylık Alanlar (Dosya)- Self-Employed Pensioner (File)</b>	<b>1.795.063</b>	<b>1.945.561</b>	<b>2.002.262</b>	<b>2.177.172</b>	<b>2.259.304</b>	<b>2.321.165</b>	<b>2.335.779</b>
<b>4-1/b Aylık Alanlar (Kişi)- Self-Employed Pensioner (Person)</b>	<b>1.965.247</b>	<b>2.088.146</b>	<b>2.160.507</b>	<b>2.381.409</b>	<b>2.469.307</b>	<b>2.422.898</b>	<b>2.432.862</b>
Yaşlılık-Old-age	1.252.324	1.341.488	1.383.633	1.515.943	1.553.730	1.575.182	1.581.070
Malullük- Invalidity	14.917	15.480	16.741	17.748	19.358	18.813	19.015
Ölen Sigortalı (Dosya)- Death (file)	527.822	588.593	601.885	643.468	686.171	727.105	735.627
Ölen Sigortalıların Haksahipleri-Survivors (Widows,Orphans)	698.006	731.178	760.130	847.705	896.174	828.838	832.710
Sürekli İş göremezlik Geliri Alanlar Receiver of permanent incapacity income	0	0	3	13	45	65	67
<b>4-1/c Aylık Alanlar (Dosya)- Self-Employed Pensioner (File)</b>	<b>1.605.589</b>	<b>1.642.059</b>	<b>1.682.720</b>	<b>1.715.507</b>	<b>1.744.873</b>	<b>1.780.461</b>	<b>1.793.141</b>
<b>4-1/c Aylık Alanlar (Kişi)- Self-Employed Pensioner (Person)</b>	<b>1.756.760</b>	<b>1.795.334</b>	<b>1.822.730</b>	<b>1.856.273</b>	<b>1.886.681</b>	<b>1.923.921</b>	<b>1.930.269</b>
Yaşlılık-Old-age	1.198.666	1.221.544	1.239.660	1.259.454	1.276.655	1.300.140	1.296.586
Malullük- Invalidity	23.155	23.577	23.703	24.059	24.290	24.528	24.487
Vazife malülü-Service-Disabled	6.401	6.543	6.608	6.711	6.858	6.921	11.243
Ölen Sigortalı (Dosya)- Death (file)	377.367	390.395	412.749	425.283	437.070	448.872	460.825
Ölen Sigortalıların Haksahipleri-Survivors (Widows,Orphans)	528.538	543.670	552.759	566.049	578.878	592.332	597.953
<b>Toplam Pasif Sigortalı (Dosya)- Total Pensioner (File)</b>	<b>8.045.815</b>	<b>8.488.856</b>	<b>8.820.679</b>	<b>9.274.682</b>	<b>9.635.709</b>	<b>9.965.089</b>	<b>10.059.159</b>
<b>Toplam Pasif Sigortalı (Kişi)- Total Pensioner (Person)</b>	<b>8.746.703</b>	<b>9.173.750</b>	<b>9.518.648</b>	<b>10.014.982</b>	<b>10.382.419</b>	<b>10.607.263</b>	<b>10.693.471</b>
<b>Özel Sandıklar Aylık Alanlar- Funds Pensioner</b>	<b>81.042</b>	<b>82.459</b>	<b>83.581</b>	<b>84.890</b>	<b>86.103</b>	<b>87.213</b>	<b>87.486</b>

Yıllar Years	Aktifler Insured	Pasifler (Dosya) Pensioner (File)	Pasifler (Kişi) Pensioner (Person)	Bağımlılar Dependents	Sosyal Güvenlik		
					Kapsamı Social Security Coverage	Aktif-Pasif Oranı Insured/Pensioner	
<b>2003</b>	6.750.460	3.584.044	3.935.523	14.618.605	25.304.588	1,88	
<b>2004</b>	6.952.848	3.769.896	4.120.866	15.863.766	26.937.480	1,84	
<b>2005</b>	7.651.705	3.957.617	4.308.186	17.385.348	29.345.239	1,93	
<b>2006</b>	8.582.395	4.166.390	4.510.701	18.040.101	31.133.197	2,06	
<b>2007</b>	9.198.577	4.391.469	4.763.434	18.694.128	32.656.139	2,09	
<b>2008</b>	9.574.873	4.645.163	5.024.696	18.980.707	33.580.276	2,06	
<b>2009</b>	9.618.438	4.901.236	5.290.270	19.617.515	34.526.223	1,96	
<b>2010</b>	10.575.935	5.135.697	5.535.411	20.704.448	36.815.794	2,06	
<b>2011</b>	11.547.134	5.382.003	5.777.300	21.024.424	38.348.858	2,15	
<b>2012</b>	12.527.337	5.631.532	6.026.431	18.461.326	37.015.094	2,22	
<b>2013</b>	13.136.339	5.863.463	6.260.444	17.784.309	37.181.092	2,24	
<b>2014</b>	<b>Ocak</b> <i>January</i>	13.095.026	5.876.829	6.278.763	17.939.762	37.313.551	2,23
	<b>Şubat</b> <i>February</i>	13.134.982	5.908.255	6.307.872	17.633.518	37.076.372	2,22
	<b>Mart</b> <i>March</i>	13.352.357	5.930.239	6.330.340	17.558.348	37.241.045	2,25

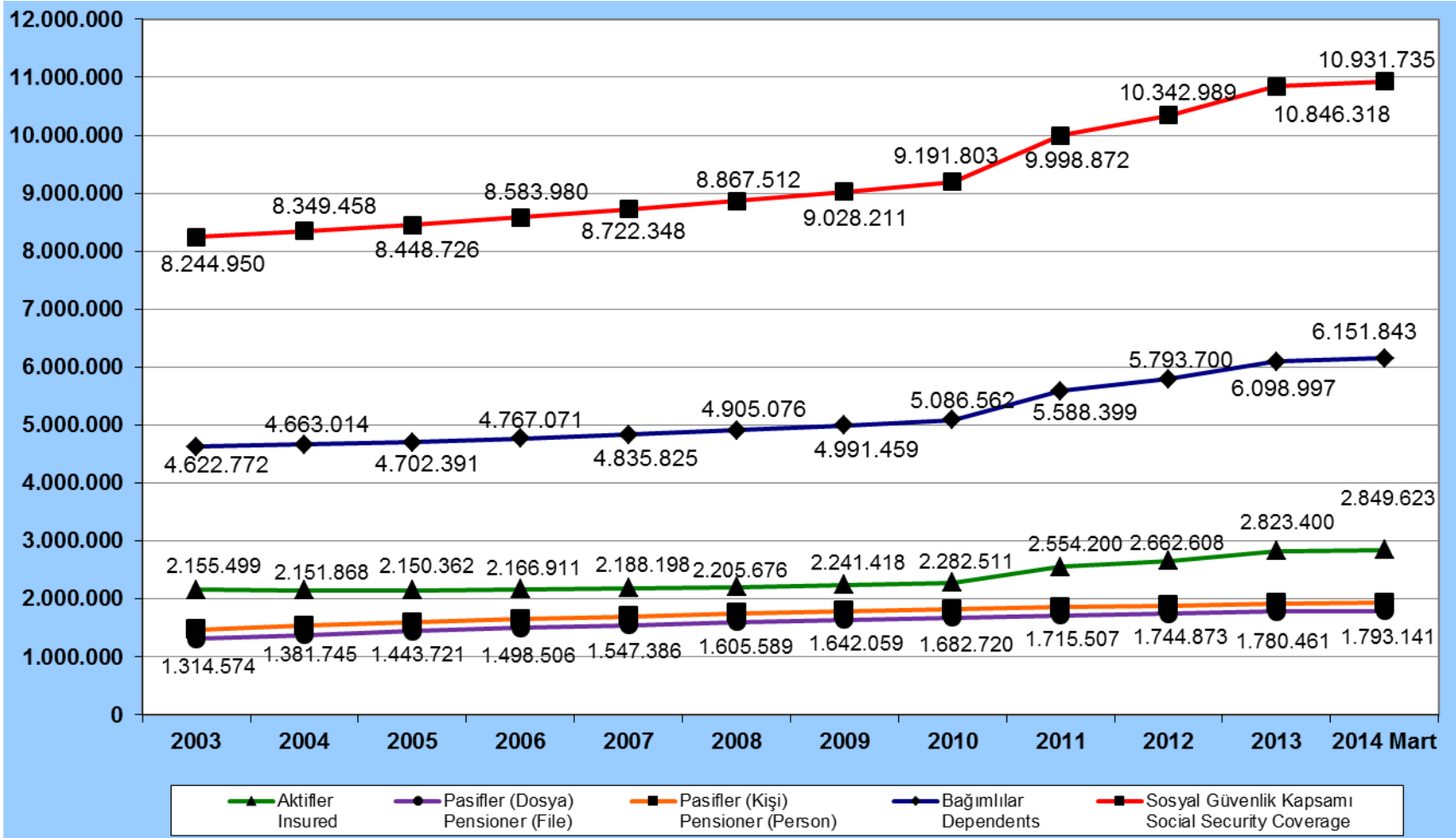


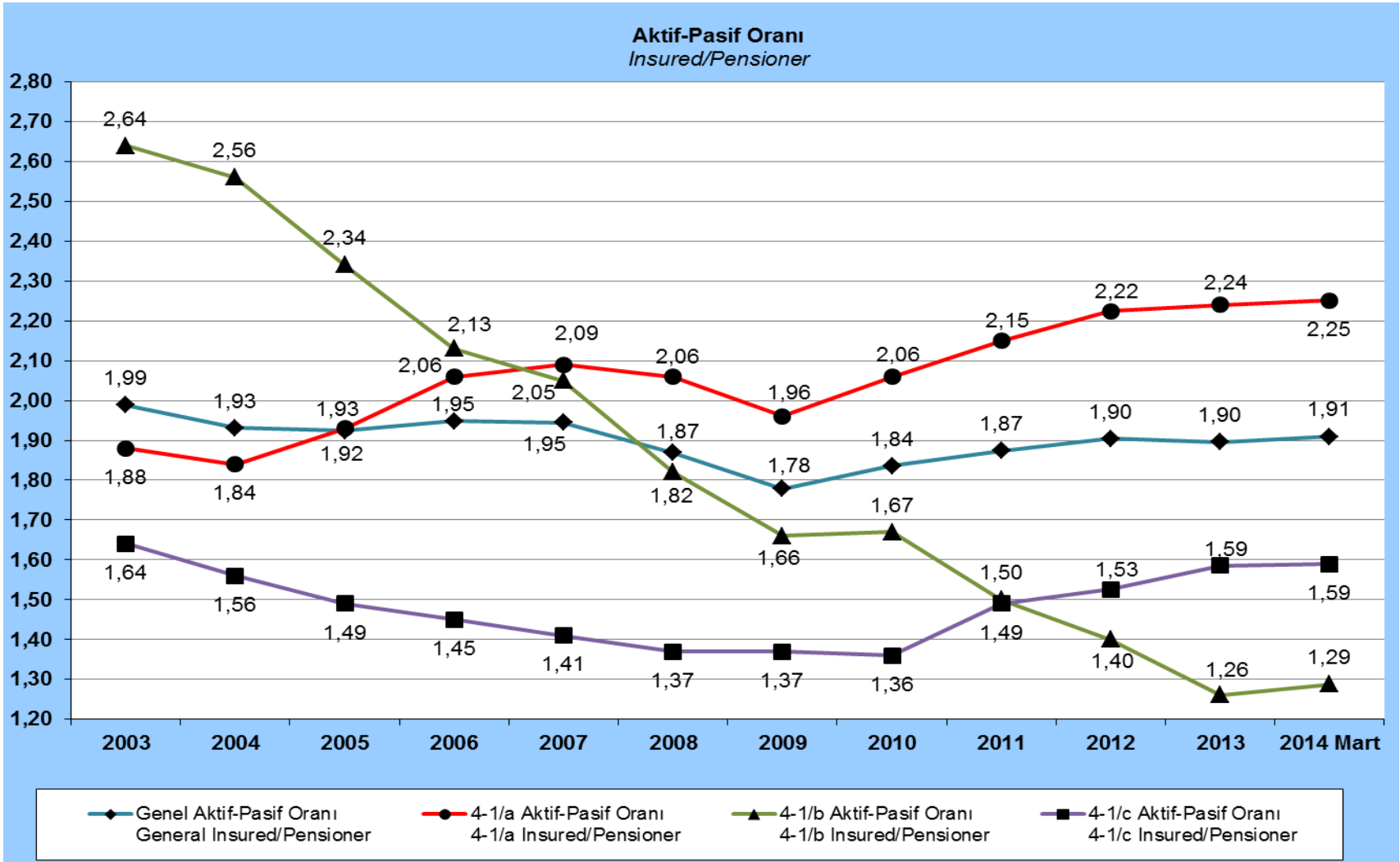


Yıllar Years	Aktifler Insured	Pasifler (Dosya) Pensioner (File)	Pasifler (Kişi) Pensioner (Person)	Bağımlılar Dependents	Sosyal Güvenlik Kapsamı Social Security Coverage	Aktif-Pasif Oranı Insured/Pensioner	
2003	3.383.849	1.279.556	1.445.820	9.419.701	14.249.370	2,64	
2004	3.448.549	1.349.284	1.519.190	9.582.500	14.550.239	2,56	
2005	3.354.372	1.435.587	1.600.294	9.335.521	14.290.187	2,34	
2006	3.375.629	1.583.997	1.753.025	9.523.226	14.651.880	2,13	
2007	3.376.300	1.650.860	1.817.685	9.540.584	14.734.569	2,05	
2008	3.260.719	1.795.063	1.965.247	9.341.482	14.567.448	1,82	
2009	3.236.872	1.945.561	2.088.146	9.380.917	14.705.935	1,66	
2010	3.337.858	2.002.262	2.160.507	9.679.426	15.177.791	1,67	
2011	3.273.297	2.177.172	2.381.409	9.735.493	15.390.199	1,50	
2012	3.162.914	2.259.304	2.469.307	9.552.698	15.184.919	1,40	
2013	2.927.250	2.321.165	2.422.898	9.061.611	14.411.759	1,26	
2014	Ocak January	2.865.903	2.326.196	2.421.366	8.913.079	14.200.348	1,23
	Şubat February	2.994.006	2.333.218	2.429.893	9.247.981	14.671.880	1,28
	Mart March	3.008.301	2.335.779	2.432.862	9.281.694	14.722.857	1,29



Yıllar Years	Aktifler Insured	Pasifler (Dosya) Pensioner (File)	Pasifler (Kişi) Pensioner (Person)	Bağımlılar Dependents	Sosyal Güvenlik Kapsamı Social Security Coverage	Aktif-Pasif Oranı Insured/Pensioner	
<b>2003</b>	2.155.499	1.314.574	1.466.679	4.622.772	8.244.950	1,64	
<b>2004</b>	2.151.868	1.381.745	1.534.576	4.663.014	8.349.458	1,56	
<b>2005</b>	2.150.362	1.443.721	1.595.973	4.702.391	8.448.726	1,49	
<b>2006</b>	2.166.911	1.498.506	1.649.998	4.767.071	8.583.980	1,45	
<b>2007</b>	2.188.198	1.547.386	1.698.325	4.835.825	8.722.348	1,41	
<b>2008</b>	2.205.676	1.605.589	1.756.760	4.905.076	8.867.512	1,37	
<b>2009</b>	2.241.418	1.642.059	1.795.334	4.991.459	9.028.211	1,37	
<b>2010</b>	2.282.511	1.682.720	1.822.730	5.086.562	9.191.803	1,36	
<b>2011</b>	2.554.200	1.715.507	1.856.273	5.588.399	9.998.872	1,49	
<b>2012</b>	2.662.608	1.744.873	1.886.681	5.793.700	10.342.989	1,53	
<b>2013</b>	2.823.400	1.780.461	1.923.921	6.098.997	10.846.318	1,59	
<b>2014</b>	<b>Ocak</b> January	2.838.873	1.786.782	1.923.078	6.128.045	10.889.996	1,59
	<b>Şubat</b> February	2.836.699	1.789.345	1.926.293	6.128.344	10.891.336	1,59
	<b>Mart</b> March	2.849.623	1.793.141	1.930.269	6.151.843	10.931.735	1,59





**4-1/a KAPSAMINDAKİ İŞYERİ VE ZORUNLU SİGORTALI SAYISININ İŞYERİ BÜYÜKLÜĞÜNE GÖRE DAĞILIMI**

*Distribution of the Work Place and Compulsory Insured Persons by Number of Insured Person in Workplace*

*[Under Article 4-1/a of Act 5510]*

<b>İşyerinde Çalıştırılan Sigortalı Sayısı</b> <i>Number of Insured Persons in Work Place</i>	<b>İşyeri Sayısı</b> <i>Number of Work Place</i>	<b>Oran</b> <i>Ratio</i>	<b>Zorunlu Sigortalı Sayısı</b> <i>Number of compulsory insured person</i>	<b>Oran</b> <i>Ratio</i>
1	564.184	35,01%	564.184	4,44%
2-3	440.481	27,33%	1.047.079	8,24%
4-6	257.161	15,96%	1.232.587	9,71%
7-9	114.421	7,10%	899.942	7,09%
10-19	127.295	7,90%	1.698.894	13,38%
20-29	41.704	2,59%	993.039	7,82%
30-49	33.838	2,10%	1.281.088	10,09%
50-99	18.121	1,12%	1.246.681	9,82%
100-249	10.401	0,65%	1.571.335	12,37%
250-499	2.802	0,17%	952.892	7,50%
500-749	668	0,04%	400.869	3,16%
750-999	250	0,02%	214.504	1,69%
1000 +	303	0,02%	597.091	4,70%
<b>TOPLAM</b> <i>Total</i>	<b>1.611.629</b>	<b>100%</b>	<b>12.700.185</b>	<b>100%</b>

**4-1/a KAPSAMINDA YIL İÇİNDE AYLIK VE GELİR BAĞLANANLARIN TAHSİS TÜRLERİNE GÖRE SAYISI**  
*Pensions According to Types of Appropriation Within Year by 4-1/a*

<b>Tahsis Türleri</b> <i>Types of Appropriation</i>	<b>2005</b>	<b>2006</b>	<b>2007</b>	<b>2008</b>	<b>2009</b>	<b>2010</b>	<b>2011</b>	<b>2012</b>	<b>2013</b>	<b>2014 Mart</b> <b>March</b>
<b>Yaşlılık Aylığı</b> <i>Old-Age Pension</i>	201.696	213.379	186.445	219.113	252.760	241.973	267.293	259.614	236.547	70.002
<b>Malullük Aylığı</b> <i>Disable Pension</i>	3.715	4.591	4.523	4.116	4.702	4.821	5.171	5.726	5.558	1.802
<b>Ölüm Aylığı (Dosya)</b> <i>Dead Pension (File)</i>	64.494	68.727	113.035	104.786	90.145	81.117	83.755	81.222	82.839	22.897
<b>Ölüm Aylığı (Kişi)</b> <i>Dead (Person)</i>	95.622	99.731	149.172	146.422	134.843	122.481	124.073	124.983	120.170	32.870
<b>Sürekli İş Görmezlik Geliri Alanlar</b> <i>Those receiving permanent incapacity income</i>	1.639	2.267	1.956	1.694	1.885	2.085	2.216	2.209	1.860	399
<b>İş Kazası ve Meslek Hastalığı Sonucu Ölüm Geliri (Dosya)</b> <i>Dead Income because of Work Insury and Occupational Disease (File)</i>	1.675	1.700	1.737	1.472	2.638	3.040	2.984	2.575	2.978	726
<b>İş Kazası ve Meslek Hastalığı Sonucu Ölüm Haksahibi (Kişi)</b> <i>Survivors of the Dead Employees because Of Work Insury and Occupational Disease(Person)</i>	3.736	3.837	3.437	3.203	5.940	6.238	6.182	5.040	5.654	1.368
<b>Toplam (Kişi)</b> <i>Total (Person)</i>	<b>306.408</b>	<b>323.805</b>	<b>345.533</b>	<b>374.548</b>	<b>400.130</b>	<b>377.598</b>	<b>404.935</b>	<b>397.572</b>	<b>369.789</b>	<b>106.441</b>

**4-1/b BAĞIMSIZ ÇALIŞANLAR 1479 SAYILI KANUN KAPSAMINDA**  
**YIL İÇİNDE AYLIK VE GELİR BAĞLANANLARIN TAHSİS TÜRLERİNE GÖRE SAYISI**

Number of Pensions According to Types of Appropriation Within Year by 4-1/b (Self-Employed Employees By the Law No:1479)

<b>Tahsis Türleri</b> <i>Types of Appropriation</i>	<b>2005</b>	<b>2006</b>	<b>2007</b>	<b>2008</b>	<b>2009</b>	<b>2010</b>	<b>2011</b>	<b>2012</b>	<b>2013</b>	<b>2014 Mart</b> <b>March</b>
<b>Yaşlılık Aylığı</b> <i>Old-Age Pension</i>	77.197	107.328	67.108	76.698	74.905	47.294	80.580	44.607	37.950	9.850
<b>Malullük Aylığı</b> <i>Disable Pension</i>	645	587	549	625	1.255	1.601	1.545	1.649	1.092	289
<b>Ölüm Aylığı (Dosya)</b> <i>Dead Pension (File)</i>	23.634	26.486	24.954	24.733	26.179	26.451	46.901	37.068	26.694	5.822
<b>Haksahipleri</b> <i>Survivors Pension</i>	31.689	39.888	35.177	37.929	35.794	32.931	50.873	46.179	31.671	7.172
<b>Sürekli İşgöremezlik Geliri Alanlar</b> <i>Those receiving permanent incapacity income</i>	0	0	0	0	0	4	10	14	1	1
<b>Toplam (Kişi)</b> <i>Total (Person)</i>	<b>109.531</b>	<b>147.803</b>	<b>102.834</b>	<b>115.252</b>	<b>111.954</b>	<b>81.830</b>	<b>133.008</b>	<b>92.449</b>	<b>70.714</b>	<b>17.312</b>



**4-1/b (BAĞIMSIZ ÇALIŞANLAR 2926) KAPSAMINDA  
YIL İÇİNDE AYLIK VE GELİR BAĞLANANLARIN TAHSİS TÜRLERİNE GÖRE SAYISI**

Number of Pensions According to Types of Appropriation Within Year by 4-1/b (Self-Employed Employees By the Law No:2926)

<b>Tahsis Türleri</b> <i>Types of Appropriation</i>	<b>2005</b>	<b>2006</b>	<b>2007</b>	<b>2008</b>	<b>2009</b>	<b>2010</b>	<b>2011</b>	<b>2012</b>	<b>2013</b>	<b>2014 Mart</b> <b>March</b>
<b>Yaşlılık Aylığı</b> <i>Old-Age Pension</i>	14.425	43.818	12.208	52.745	47.901	24.457	93.156	25.855	23.327	5.772
<b>Malüllük Aylığı</b> <i>Disable Pension</i>	184	184	165	155	529	774	741	1.115	768	247
<b>Ölüm Aylığı (Dosya)</b> <i>Dead Pension (File)</i>	7.509	9.396	7.652	8.336	11.311	12.752	31.036	15.405	11.232	2.560
<b>Haksahipleri</b> <i>Survivors Pension</i>	8.704	13.371	9.530	9.258	14.577	15.134	33.948	19.759	14.425	3.144
<b>Sürekli İşgöremezlik Geliri Alanlar</b> <i>Those receiving permanent incapacity income</i>	0	0	0	0	0	0	0	20	1	0
<b>Toplam (Kişi)</b> <i>Total (Person)</i>	<b>23.313</b>	<b>57.373</b>	<b>21.903</b>	<b>62.158</b>	<b>63.007</b>	<b>40.365</b>	<b>127.845</b>	<b>46.749</b>	<b>38.521</b>	<b>9.163</b>

**4-1/c KAPSAMINDA YIL İÇİNDE AYLIK VE GELİR BAĞLANANLARIN TAHSİS TÜRLERİNE GÖRE SAYISI**

Number of Pensions According to Types of Appropriation Within Year by 4-1/c

<b>Tahsis Türleri</b> <i>Types of Appropriation</i>	<b>2005</b>	<b>2006</b>	<b>2007</b>	<b>2008</b>	<b>2009</b>	<b>2010</b>	<b>2011</b>	<b>2012</b>	<b>2013</b>	<b>2014 Mart</b> <b>March</b>
<b>Yaşlılık Aylığı</b> <i>Old -Age Pension</i>	81.322	69.617	44.875	63.360	44.142	32.512	30.573	27.731	23.476	8.946
<b>Malullük Aylığı</b> <i>Disable Pension</i>	1.163	1.220	1.257	1.109	1.045	500	583	491	405	166
<b>Vazife Malulü</b> <i>Duty Disable Pension</i>	102	118	51	23	21	34	35	44	61	31
<b>Ölüm Aylığı (Dosya)</b> <i>Dead Pension (File)</i>	-	-	-	-	-	14.768	20.258	19.128	11.445	6.543
<b>Haksahipleri</b> <i>Survivors Pension</i>	40.705	39.439	42.768	40.439	40.047	21.706	30.215	25.175	17.166	9.136
<b>Vataniler</b> <i>Patriotic Services (*)</i>	-	-	-	-	-	77	45	60	92	48
<b>Toplam (Kişi)</b> <i>Total (Person)</i>	<b>123.292</b>	<b>110.394</b>	<b>88.951</b>	<b>104.931</b>	<b>85.255</b>	<b>54.752</b>	<b>61.406</b>	<b>53.441</b>	<b>41.108</b>	<b>18.279</b>

(\*) Yıl içinde aylık ve gelir bağlanan sayılarının içine vataniler dahil değildir.

(\*) The patriots are not included in total of pensioner

**4-1/a KAPSAMINDA SİGORTALI ÇALIŞTIRAN İŞYERİ SAYILARI**  
*Number of Work Places Covered by 4-1/a (EUSC)*

Yıllar <i>Years</i>	Daimi <i>Permanent</i>	Mevsimlik <i>Seasonal</i>	Kamu <i>Public</i>	Özel <i>Private</i>	Toplam <i>Total</i>	
<b>2003</b>	683.496	93.681	23.848	753.329	<b>777.177</b>	
<b>2004</b>	746.464	104.464	25.585	825.343	<b>850.928</b>	
<b>2005</b>	814.093	130.891	31.198	913.786	<b>944.984</b>	
<b>2006</b>	880.084	156.244	28.699	1.007.629	<b>1.036.328</b>	
<b>2007</b>	956.873	159.765	31.304	1.085.334	<b>1.116.638</b>	
<b>2008</b>	1.015.000	155.248	30.369	1.139.879	<b>1.170.248</b>	
<b>2009</b>	1.057.541	158.767	36.031	1.180.277	<b>1.216.308</b>	
<b>2010</b>	1.147.632	178.117	37.056	1.288.693	<b>1.325.749</b>	
<b>2011</b>	1.245.079	190.800	37.600	1.398.279	<b>1.435.879</b>	
<b>2012</b>	1.341.822	196.184	38.982	1.499.024	<b>1.538.006</b>	
<b>2013</b>	1.391.621	219.671	35.692	1.575.600	<b>1.611.292</b>	
<b>2014</b>	<b>Ocak</b> <i>January</i>	1.403.570	190.694	36.132	1.558.132	<b>1.594.264</b>
	<b>Şubat</b> <i>February</i>	1.405.041	194.286	36.420	1.562.907	<b>1.599.327</b>
	<b>Mart</b> <i>March</i>	1.414.000	197.629	36.597	1.575.032	<b>1.611.629</b>

**4-1/a KAPSAMINDAKİ ZORUNLU SİGORTALI SAYILARI**  
*Number of Compulsorily Insured Covered by 4-1/a (EUSC)*

Yıllar Years	Daimi Permanent	Mevsimlik Seasonal	Kamu Public	Özel Private	Erkek Male	Kadın Female	Toplam Total	
<b>2003</b>	4.833.366	781.872	686.157	4.929.081	4.448.499	1.166.739	<b>5.615.238</b>	
<b>2004</b>	5.302.370	878.881	661.380	5.519.871	4.927.085	1.254.166	<b>6.181.251</b>	
<b>2005</b>	5.774.759	1.143.846	680.500	6.238.105	5.486.494	1.432.111	<b>6.918.605</b>	
<b>2006</b>	6.356.152	1.462.490	659.899	7.158.743	6.191.309	1.627.333	<b>7.818.642</b>	
<b>2007</b>	6.919.783	1.585.607	722.015	7.783.375	6.603.475	1.901.915	<b>8.505.390</b>	
<b>2008</b>	7.156.453	1.646.536	731.704	8.071.285	6.774.527	2.082.462	<b>8.802.989</b>	
<b>2009</b>	7.308.795	1.721.407	852.248	8.177.954	6.870.750	2.159.452	<b>9.030.202</b>	
<b>2010</b>	8.043.894	1.986.916	868.753	9.162.057	7.599.143	2.431.667	<b>10.030.810</b>	
<b>2011</b>	8.819.207	2.211.732	806.374	10.224.565	8.351.256	2.679.683	<b>11.030.939</b>	
<b>2012</b>	9.489.846	2.449.774	875.122	11.064.498	8.957.841	2.981.779	<b>11.939.620</b>	
<b>2013</b>	9.816.455	2.667.658	800.638	11.683.475	9.297.209	3.186.904	<b>12.484.113</b>	
<b>2014</b>	<b>Ocak January</b>	9.906.866	2.541.092	809.358	11.638.600	9.246.963	3.200.995	<b>12.447.958</b>
	<b>Şubat February</b>	9.917.192	2.568.825	819.824	11.666.193	9.261.560	3.224.457	<b>12.486.017</b>
	<b>Mart March</b>	10.064.437	2.635.748	853.327	11.846.858	9.420.760	3.279.425	<b>12.700.185</b>

**4-1/a KAPSAMINDA PRİME ESAS ORTALAMA GÜNLÜK KAZANÇLAR (TL)**

*Average Daily Earning Covered by 4-1/a (EUSC) (TL)*

Yıllar Years	Daimi Permanent	Mevsimlik Seasonal	Kamu Public	Özel Private	Erkek Male	Kadın Female	Genel Ortalama Günlük Kazanç General Average Daily Earning	
<b>2003</b>	24,88	19,44	43,31	21,40	24,57	22,16	<b>24,20</b>	
<b>2004</b>	27,37	20,05	52,34	23,23	26,57	25,82	<b>26,44</b>	
<b>2005</b>	29,80	21,59	57,75	25,35	28,91	27,31	<b>28,58</b>	
<b>2006</b>	32,10	22,81	59,83	27,77	30,73	29,83	<b>30,54</b>	
<b>2007</b>	36,10	26,31	63,75	31,81	34,55	34,15	<b>34,46</b>	
<b>2008</b>	39,13	29,37	66,15	34,80	37,57	37,10	<b>37,46</b>	
<b>2009</b>	41,75	31,97	67,02	37,20	40,04	39,99	<b>40,03</b>	
<b>2010</b>	45,28	34,83	74,27	40,51	43,36	43,49	<b>43,39</b>	
<b>2011</b>	48,50	37,14	74,15	43,44	46,73	45,43	<b>46,41</b>	
<b>2012</b>	54,72	42,59	83,27	49,65	53,14	50,46	<b>52,48</b>	
<b>2013</b>	60,14	47,40	96,25	55,14	58,74	54,63	<b>57,69</b>	
<b>2014</b>	<b>Ocak</b> <i>January</i>	60,86	49,20	99,21	56,05	58,21	52,76	<b>58,71</b>
	<b>Şubat</b> <i>February</i>	59,53	48,73	85,63	55,63	58,23	55,44	<b>57,51</b>
	<b>Mart</b> <i>March</i>	61,57	49,19	89,47	57,18	60,20	56,44	<b>59,23</b>

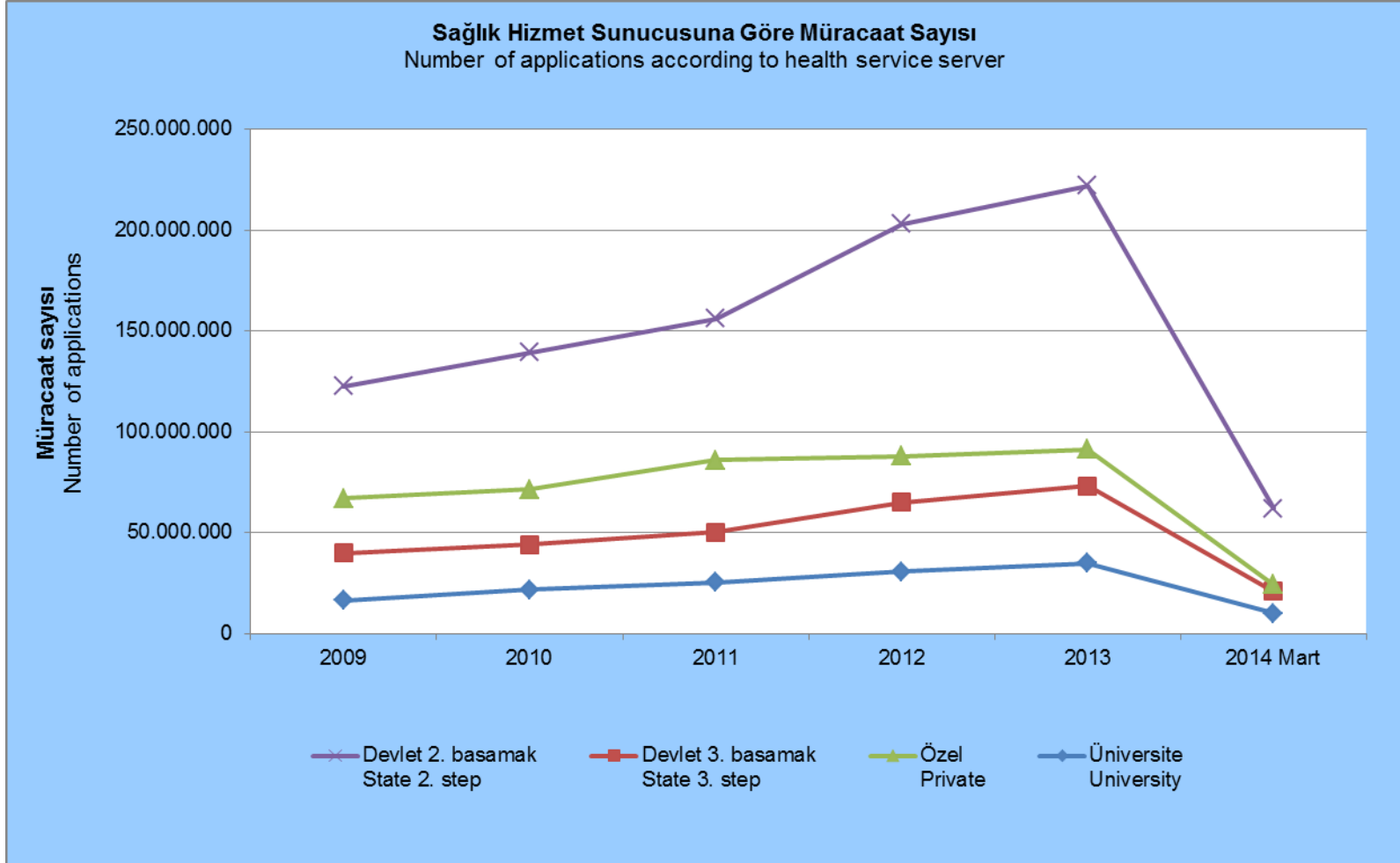
# SAĞLIK İSTATİSTİKLERİ

## HEALTH STATISTICS

---

**Sağlık Hizmet Sunucusuna Göre Müracaat Sayısı (Adet)**  
Number of applications (units) according to health service server

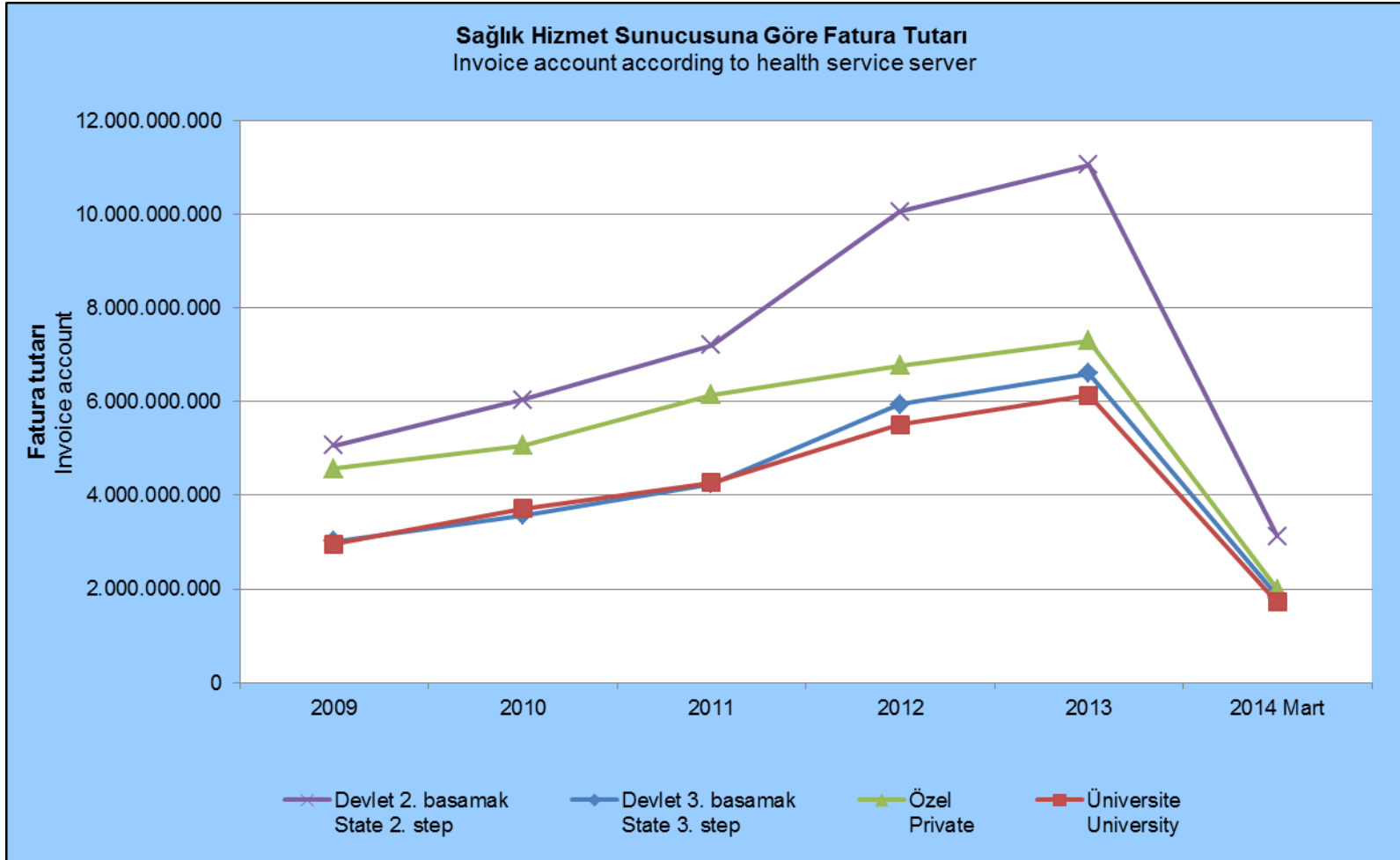
Yıllar Years	Devlet 2. basamak State 2. step	Devlet 3. basamak State 3. step	Özel Private	Üniversite University	Toplam Total	
<b>2009</b>	122.659.222	39.905.224	66.877.219	16.487.944	245.929.609	
<b>2010</b>	139.292.850	44.074.572	71.469.822	21.775.322	276.612.566	
<b>2011</b>	156.117.258	50.141.980	85.924.477	25.178.757	317.362.472	
<b>2012</b>	203.135.332	65.123.572	87.932.174	30.592.422	386.783.500	
<b>2013</b>	222.136.043	73.167.494	91.386.098	34.698.578	421.388.213	
<b>2014</b>	<b>Ocak</b> January	21.787.694	7.167.940	8.657.926	3.311.586	40.925.146
	<b>Şubat</b> February	19.600.089	6.725.885	7.489.911	3.149.254	36.965.139
	<b>Mart</b> March	20.531.947	6.871.346	8.151.906	3.388.041	38.943.240
	<b>Toplam</b> Total	<b>61.919.730</b>	<b>20.765.171</b>	<b>24.299.743</b>	<b>9.848.881</b>	<b>116.833.525</b>





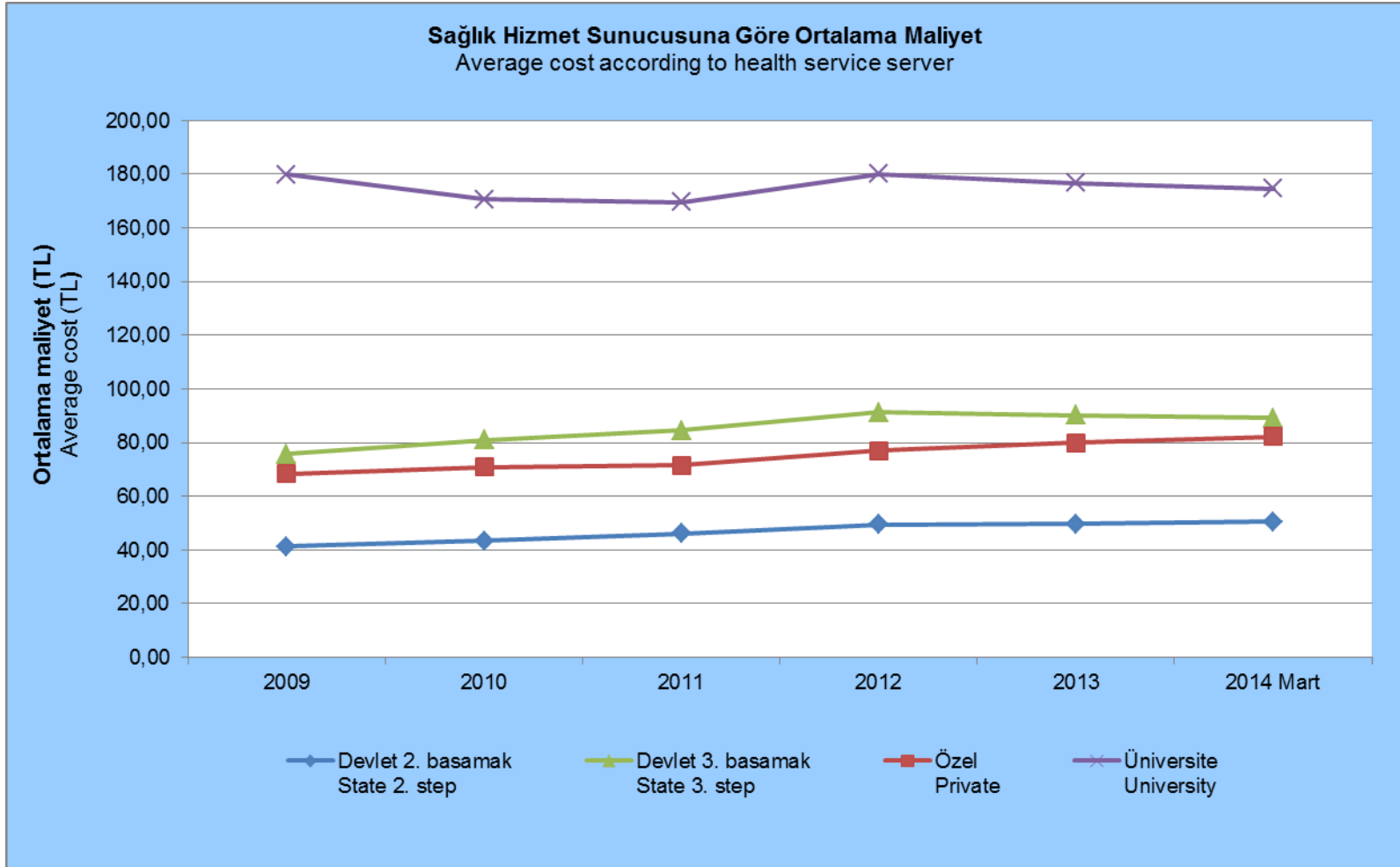
**Sağlık Hizmet Sunucusuna Göre Fatura Tutarı KDV Hariç (TL)**  
Vat excluded invoice account according to health service server (TL)

Yıllar Years	Devlet 2. basamak State 2. step	Devlet 3. basamak State 3. step	Özel Private	Üniversite University	Toplam Total	
<b>2009</b>	5.063.641.017	3.018.857.733	4.569.339.697	2.962.980.699	15.614.819.147	
<b>2010</b>	6.035.032.721	3.567.138.411	5.059.208.813	3.715.546.472	18.376.926.418	
<b>2011</b>	7.200.668.805	4.242.561.614	6.145.045.152	4.266.901.662	21.855.177.232	
<b>2012</b>	10.051.989.632	5.945.099.733	6.771.108.316	5.506.848.033	28.275.045.714	
<b>2013</b>	11.049.400.853	6.598.896.098	7.294.698.192	6.129.775.327	31.072.770.470	
<b>2014</b>	<b>Ocak</b> January	1.058.438.387	620.724.071	693.582.997	571.514.396	2.944.259.850
	<b>Şubat</b> February	1.016.751.507	603.708.134	635.870.435	561.789.335	2.818.119.412
	<b>Mart</b> March	1.052.615.954	627.373.578	669.765.056	586.447.436	2.936.202.024
	<b>Toplam</b> Total	<b>3.127.805.848</b>	<b>1.851.805.783</b>	<b>1.999.218.488</b>	<b>1.719.751.168</b>	<b>8.698.581.287</b>



**Sağlık Hizmet Sunucusuna Göre Ortalama Maliyet (TL)**  
Cost average by the health service server (TL)

Yıllar Years	Devlet 2. basamak State 2. step	Devlet 3. basamak State 3. step	Özel Private	Üniversite University	Ortalama maliyet Average cost	
<b>2009</b>	41,28	75,65	68,32	179,71	63,49	
<b>2010</b>	43,33	80,93	70,79	170,63	66,44	
<b>2011</b>	46,12	84,61	71,52	169,46	68,87	
<b>2012</b>	49,48	91,29	77,00	180,01	73,10	
<b>2013</b>	49,74	90,19	79,82	176,66	73,74	
<b>2014</b>	<b>Ocak</b> January	48,58	86,60	80,11	172,58	71,94
	<b>Şubat</b> February	51,87	89,76	84,90	178,39	76,24
	<b>Mart</b> March	51,27	91,30	82,16	173,09	75,40
	<b>Ortalama</b> Average	<b>50,51</b>	<b>89,18</b>	<b>82,27</b>	<b>174,61</b>	<b>74,45</b>



**Eczane Provizyon Sistemi Reçete Analizi**  
Prescription analysis relating to pharmacy provision system

Yıllar Years	Reçete sayısı (Adet) Number of prescription (Units)	Fatura tutarı (TL) Amount of invoice (TL)	Reçete başı ortalama maliyet Average cost per prescription	
<b>2009</b>	327.495.365	15.867.368.264	48,45	
<b>2010</b>	308.529.666	15.047.427.391	48,77	
<b>2011</b>	339.224.614	15.246.731.192	44,95	
<b>2012</b>	336.106.299	13.854.268.527	41,22	
<b>2013</b>	338.021.257	14.883.074.014	44,03	
<b>2014</b>	<b>Ocak</b> January	33.434.124	1.442.338.665	43,14
	<b>Şubat</b> February	27.981.788	1.278.479.063	45,69
	<b>Mart</b> March	30.861.360	1.383.578.821	44,83
	<b>Toplam</b> Total	<b>92.277.272</b>	<b>4.104.396.549</b>	<b>44,48</b>

# MALİ İSTATİSTİKLER

## FISCAL STATISTICS

---

**SGK KONSOLİDE NAKİT AKIM TABLOSU**  
Consolidated Cash Flow of SSI

	<b>Milyon TL Million TL</b>					
<b>Gelir-Gider Kalemleri</b> Revenue-Expense Items	<b>2009</b>	<b>2010</b>	<b>2011</b>	<b>2012</b>	<b>2013</b>	<b>2014 Bütçe</b> Budget
<b>Gelirler</b> Revenues	<b>78.073</b>	<b>95.273</b>	<b>124.480</b>	<b>142.929</b>	<b>163.014</b>	<b>180.013</b>
<b>Prim Gelirleri</b> Premium Revenues	54.579	66.913	89.561	99.359	118.729	131.482
<b>Diğer Gelirler</b> Other Revenues	23.494	28.360	34.919	43.569	44.285	48.531
<b>Giderler</b> Expenses	<b>106.775</b>	<b>121.997</b>	<b>140.715</b>	<b>160.223</b>	<b>182.689</b>	<b>201.597</b>
<b>Emekli Aylıkları</b> Pension Payments	68.604	78.957	91.615	105.294	119.162	133.064
<b>Sağlık Giderleri</b> Health Expenses	28.811	32.509	36.500	44.111	49.889	54.017
<b>Diğer Giderler</b> Other Expenses	9.361	10.531	12.599	10.819	13.639	14.516
<b>Açık</b> Deficit	<b>-28.703</b>	<b>-26.724</b>	<b>-16.235</b>	<b>-17.295</b>	<b>-19.675</b>	<b>-21.583</b>

**1- Prim gelirlerine yeniden yapılandırma prim gelirleri dahildir. Emekli aylığı ödemelerine SYZ dahil olup ek ödeme dahil değildir.**

**2- Sağlık giderlerine yolluk giderleri dahil değildir ve diğer giderlerin içindedir.**

**3- 2009-2014 emekli aylık ödemelerine katılım payları, icra, nafaka vb. kesintiler ilave edilmiştir.**

*1- Restructuring premium revenues is included inside the premium revenues. Social welfare increase is found inside the retirement pension payments, but additional payment.*

*2- Travel allowance are not included within health expenses and these are included within other expenses.*

*3- Patient shares, execution deduction and alimony deduction and etc. are added into the retirement pension payments of years 2009-2014.*

**SGK GELİR VE GİDER DENGESİ**  
Revenues and Expenses of SSI

Bin TL Thousand TL

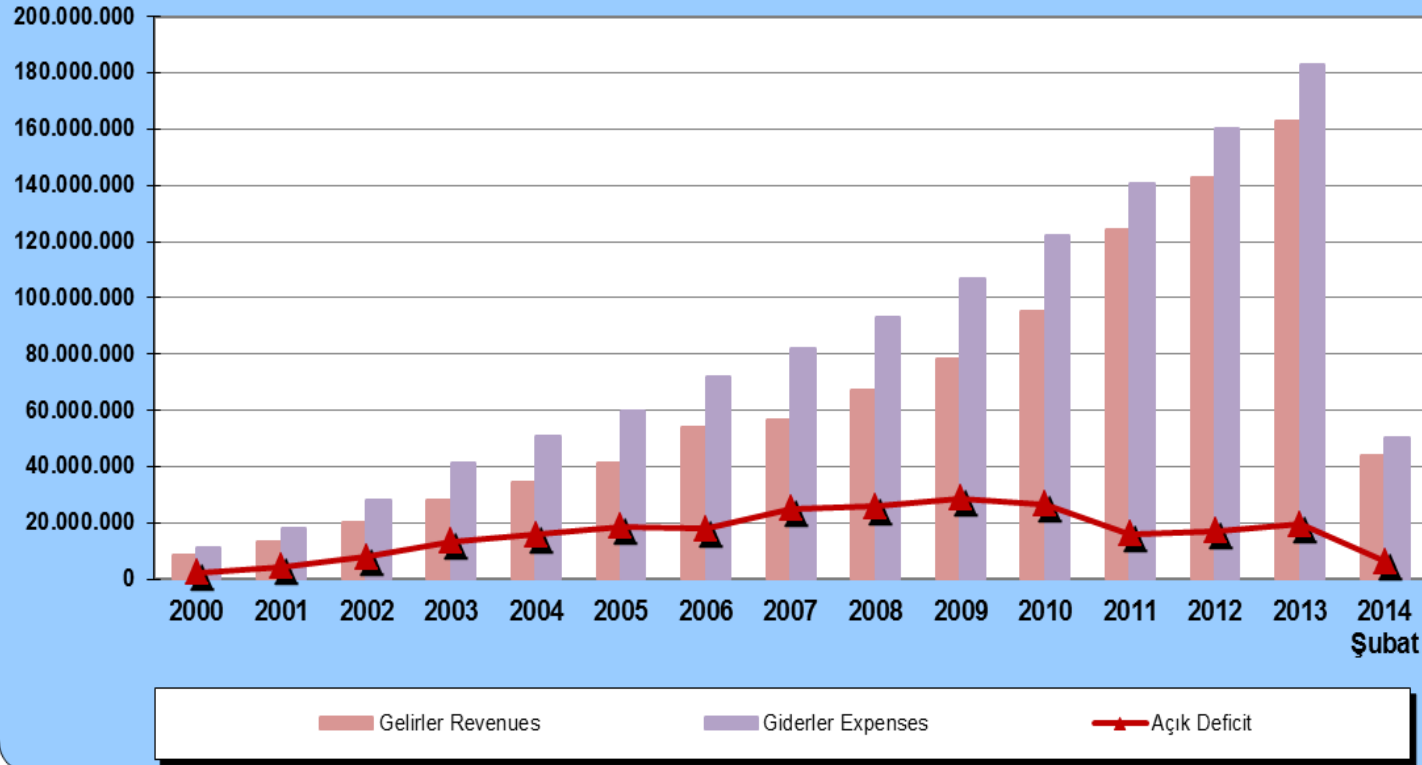
Yıllar Years	Gelirler Revenues	Artış Oranı (%) Rate of Increase	Giderler Expenses	Artış Oranı (%) Rate of Increase	Açık Deficit	Toplam Gelirlerin Toplam Giderleri Karşılama Oranı Compensation Rate of Total Expenses by Total Revenues	
2000	8.575.831	-	10.987.036	-	-2.411.206	<b>78,1%</b>	
2001	13.360.579	<b>55,79</b>	17.830.745	<b>62,29</b>	-4.470.166	<b>74,9%</b>	
2002	20.018.189	<b>49,83</b>	27.982.464	<b>56,93</b>	-7.964.275	<b>71,5%</b>	
2003	27.916.539	<b>39,46</b>	41.336.077	<b>47,72</b>	-13.419.538	<b>67,5%</b>	
2004	34.689.248	<b>24,26</b>	50.621.622	<b>22,46</b>	-15.932.374	<b>68,5%</b>	
2005	41.249.438	<b>18,91</b>	59.941.373	<b>18,41</b>	-18.691.935	<b>68,8%</b>	
2006	53.830.886	<b>30,50</b>	71.867.475	<b>19,90</b>	-18.036.589	<b>74,9%</b>	
2007	56.874.830	<b>5,65</b>	81.915.401	<b>13,98</b>	-25.040.571	<b>69,4%</b>	
2008	67.257.484	<b>18,26</b>	93.159.462	<b>13,73</b>	-25.901.978	<b>72,2%</b>	
2009	78.072.788	<b>16,08</b>	106.775.443	<b>14,62</b>	-28.702.655	<b>73,1%</b>	
2010	95.273.183	<b>22,03</b>	121.997.301	<b>14,26</b>	-26.724.118	<b>78,1%</b>	
2011	124.479.836	<b>30,66</b>	140.714.602	<b>15,34</b>	-16.234.766	<b>88,5%</b>	
2012	142.928.505	<b>14,82</b>	160.223.453	<b>13,86</b>	-17.294.948	<b>89,2%</b>	
2013	163.013.555	<b>14,05</b>	182.688.916	<b>14,02</b>	-19.675.361	<b>89,2%</b>	
2014	Ocak January	15.546.788	-	16.842.174	-	-1.295.385	<b>92,3%</b>
	Şubat February	13.755.284	<b>-11,52</b>	16.834.730	<b>-0,04</b>	-3.079.446	<b>81,7%</b>
	Mart March	14.846.024	<b>7,93</b>	16.686.350	<b>-0,88</b>	-1.840.327	<b>89,0%</b>
	Toplam Total	<b>44.148.096</b>		<b>50.363.254</b>		<b>-6.215.158</b>	<b>87,7%</b>

**NOT:** Nakit Hareketler Tablosu Dikkate Alınarak Hazırlanan Geçici Gerçekleşme Rakamlarıdır.

**Note:** The values are the realization values which are calculated by taking cash flow statement into account.



**Sosyal Güvenlik Kurumunun Toplam Gelir ve Giderleri (Bin TL)**  
Total Revenue and Expenses of Social Security Institution (Thousand TL)



**DEVLET KATKISI HARİÇ PRİM GELİRLERİ VE EMEKLİ AYLIĞI ÖDEMELERİ**

Premium Revenues and Pension Payments Except State Contribution

Bin TL Thousand TL

Yıllar (Years)	Prim Gelirleri Premium Revenues			Emekli Aylığı Ödemeleri Pension Payments			Toplam Total		
	(4/a)	(4/b)	(4/c)	(4/a)	(4/b)	(4/c)	Prim Gelirleri Premium Revenues	Emekli Aylığı Ödemeleri Pension Payments	
	EUSC	Self Employed	Civil Servant	EUSC	Self Employed	Civil Servant			
<b>2000</b>	4.221.000	697.348	1.657.000	3.574.600	846.100	2.336.000	<b>6.575.348</b>	<b>6.756.700</b>	
<b>2001</b>	5.985.000	1.224.521	2.530.000	5.708.300	1.299.300	3.689.000	<b>9.739.521</b>	<b>10.696.600</b>	
<b>2002</b>	8.941.000	2.035.260	3.845.653	8.953.900	1.993.200	5.740.300	<b>14.821.913</b>	<b>16.687.400</b>	
<b>2003</b>	12.745.000	2.913.326	5.520.100	13.676.400	3.725.300	7.772.500	<b>21.178.426</b>	<b>25.174.200</b>	
<b>2004</b>	16.967.484	4.016.675	6.439.631	16.555.700	4.679.000	9.426.000	<b>27.423.790</b>	<b>30.660.700</b>	
<b>2005</b>	19.865.378	3.643.394	7.373.633	21.944.000	5.526.100	11.067.000	<b>30.882.405</b>	<b>38.537.100</b>	
<b>2006</b>	25.703.675	8.102.200	7.814.000	24.978.000	7.003.855	13.094.000	<b>41.619.875</b>	<b>45.075.855</b>	
<b>2007</b>	29.562.848	5.742.829	8.746.000	29.410.421	8.101.755	14.799.552	<b>44.051.677</b>	<b>52.311.728</b>	
<b>2008</b>	34.734.233	9.523.271	10.288.949	33.507.897	9.099.326	16.529.316	<b>54.546.453</b>	<b>59.136.539</b>	
<b>2009</b>	38.054.029	5.059.463	11.465.690	38.800.036	11.330.535	18.473.401	<b>54.579.182</b>	<b>68.603.972</b>	
<b>2010</b>	45.644.795	5.399.065	15.868.998	45.455.425	13.337.123	20.164.951	<b>66.912.858</b>	<b>78.957.499</b>	
<b>2011</b>	55.982.417	6.521.944	19.284.444	53.380.121	15.929.064	22.306.194	<b>81.788.805</b>	<b>91.615.378</b>	
<b>2012</b>	68.852.359	8.209.455	22.297.428	61.536.617	18.427.247	25.329.935	<b>99.359.243</b>	<b>105.293.799</b>	
<b>2013</b>	85.655.169	8.065.492	25.007.917	71.427.291	20.066.957	27.667.413	<b>118.728.578</b>	<b>119.161.662</b>	
<b>2014</b>	<b>Ocak</b> January	7.335.133	679.677	2.448.578	6.382.433	1.769.937	2.914.592	<b>10.463.389</b>	<b>11.066.962</b>
	<b>Şubat</b> February	7.274.750	548.647	1.915.550	6.421.375	1.779.166	2.708.917	<b>9.738.947</b>	<b>10.909.458</b>
	<b>Mart</b> March	7.727.446	631.645	2.865.154	6.438.413	1.777.565	2.457.100	<b>11.224.245</b>	<b>10.673.078</b>
	<b>Toplam</b> Total	<b>22.337.329</b>	<b>1.859.969</b>	<b>7.229.282</b>	<b>19.242.221</b>	<b>5.326.669</b>	<b>8.080.609</b>	<b>31.426.580</b>	<b>32.649.498</b>

**SGK SAĞLIK HARCAMALARI**  
Health Expenses of SSI

Milyon TL Million TL

Yıllar Years	İlaç Medicine	Tedavi Treatment	Diğer Other	Toplam Total	
2000	1.388	1.061	184	2.633	
2001	2.433	1.799	343	4.575	
2002	4.301	2.831	498	7.630	
2003	5.615	4.363	685	10.663	
2004	6.399	5.906	845	13.150	
2005	7.001	5.626	981	13.608	
2006	8.372	8.490	805	17.667	
2007	8.858	10.268	858	19.984	
2008	10.717	13.953	677	25.347	
2009	13.161	15.129	521	28.811	
2010	13.547	18.469	493	32.509	
2011	14.144	21.848	508	36.500	
2012	14.300	29.206	605	44.111	
2013	15.673	33.508	708	49.889	
2014	Ocak January	1.315	3.225	52	4.592
	Şubat February	1.449	3.377	51	4.876
	Mart March	1.514	2.999	95	4.607
	Toplam Total	4.277	9.600	198	14.076

**NOT:** Sağlık harcamalarına yolluk giderleri dahil değildir.

**Note:** Travel allowance is not included within health expenses.

**NET ASGARİ ÜCRET HESABI VE İŞÇİNİN İŞVERENE MALİYETİ**  
Account of Net Minimum Wage and Cost of Employee for Employer

**Net asgari ücretin hesabı ( TL/Ay)**  
Account of net minimum wage (TL/Month)

Dönem Period	01.01.2013-30.06.2013	01.01.2014-30.06.2014
<b>Brüt asgari ücret</b> Gross minimum wage	<b>978,60</b>	<b>1.071,00</b>
<b>SGK Primi işçi payı (% 14)</b> Social insurance premium by employee	137,00	149,94
<b>İşsizlik sigortası işçi payı % 1</b> Unemployment insurance premium by employee	9,79	10,71
<b>Gelir vergisi %15</b> Income tax	124,77	136,55
<b>Asgari geçim indirimi (Bekar kişi)</b> Cost of living allowance (Single Person)	73,40	80,33
<b>Damga vergisi % 0,0759</b> Stamp tax	7,43	8,13
<b>Kesintiler toplamı</b> Total deductions	278,99	305,33
<b>Net asgari ücret</b> Net minimum wage (*)	<b>773,01</b>	<b>845,99</b>

**İşçinin işverene maliyeti (TL/Ay)**  
Cost of employee for employer (TL/Month)

<b>SGK primi işveren payı %14,5</b> Social insurance premium by employer (**) <b>01/09/2013 tarihinden itibaren %15,5</b> since 01/09/2013 %15,5	141,90	166,01
<b>İşsizlik sigortası işveren payı % 2</b> Unemployment insurance premium by employer	19,57	21,42
<b>İşverene toplam maliyet</b> Total cost for employer	<b>1.140,07</b>	<b>1.258,43</b>

(\*)Net ele geçen asgari ücrete asgari geçim indirimi ilave edilmiştir.

(\*\*) 5510 sayılı Kanununun 81. maddesinin (ı) bendine göre, bentde belirtilen şartları sağlayan işverenlere, SGK primi işveren payında 5 puanlık indirim öngörüldüğünden hesaplamalar buna göre yapılmıştır. Gerekli şartları sağlamayan işverenler için, 01/09/2013 tarihinden itibaren SGK primi, işsizlik sigortası da dahil olmak üzere %22,5'tir.

(\*)Cost of living allowance is added to net minimum wage.

(\*\*) Calculations were made by considering 5 point-discount in employer share of SSI Premium which is applied to those who fulfil the conditions in Law No.5510 article 81/(ı). For the employers who do not fulfil the conditions SSI Premium is 22,5% including unemployment insurance Premium share since 01/09/2013.

# Aktüerya ve Fon Yönetimi Daire Başkanlığı tarafından hazırlanmaktadır.

Sunum ile ilgili görüş, öneri ve sorularınız için;

**Tel** : 0 312 207 87 03

0 312 207 78 52

**E-mail** : [mtuzen@sgk.gov.tr](mailto:mtuzen@sgk.gov.tr)

[tmustu@sgk.gov.tr](mailto:tmustu@sgk.gov.tr)

## Kaynaklar

SGK Aylık İstatistik Bülteni

SGK İstatistik Yıllığı

---

# It has been prepared by Department of Actuarial and Financial Management

**For comments, suggestions and questions about the  
presentation please contact;**

**Tel : 0 312 207 87 03**

**0 312 207 78 52**

**E-mail : [mtuzen@sgk.gov.tr](mailto:mtuzen@sgk.gov.tr)**

**[tmustu@sgk.gov.tr](mailto:tmustu@sgk.gov.tr)**

## **Sources**

Monthly Statistical Bulletin, SSI

Statistical Yearbook, SSI

---